

Sonoma Water Organizational Overview



**Sonoma
Water**

Mission Statement: To provide reliable water supply, wastewater management and flood protection — essential services for a thriving community and a healthy environment.

At a glance

Established

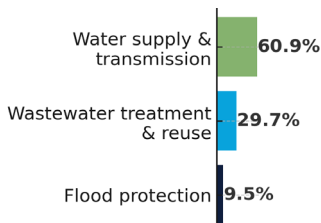
1949

Full-time employees

262

FY 25/26 annual
budgets combined

\$350,881,000



While a separate legal entity created by state law, Sonoma Water's Board of Directors is the

**Sonoma County
Board of
Supervisors**

Type of government
agency

**Dependent
special district**



Core functions

Water supply: Maintain a water supply and transmission system that provides naturally filtered Russian River water to nine cities and special districts that in turn delivers drinking water to more than 600,000 residents in portions of Sonoma and Marin counties. Water contractors include the City of Cotati, Marin Municipal Water District, North Marin Water District, City of Petaluma, City of Rohnert Park, City of Santa Rosa, City of Sonoma, Valley of the Moon Water District and the Town of Windsor.

Flood protection: Manage a variety of flood protection projects, including Matanzas Creek Reservoir, Piner Creek Reservoir, Brush Creek Middle Fork Reservoir and Spring Creek Reservoir, also known as Spring Lake. Manage a stream maintenance program that maintains more than 80 miles of creeks throughout our service area.

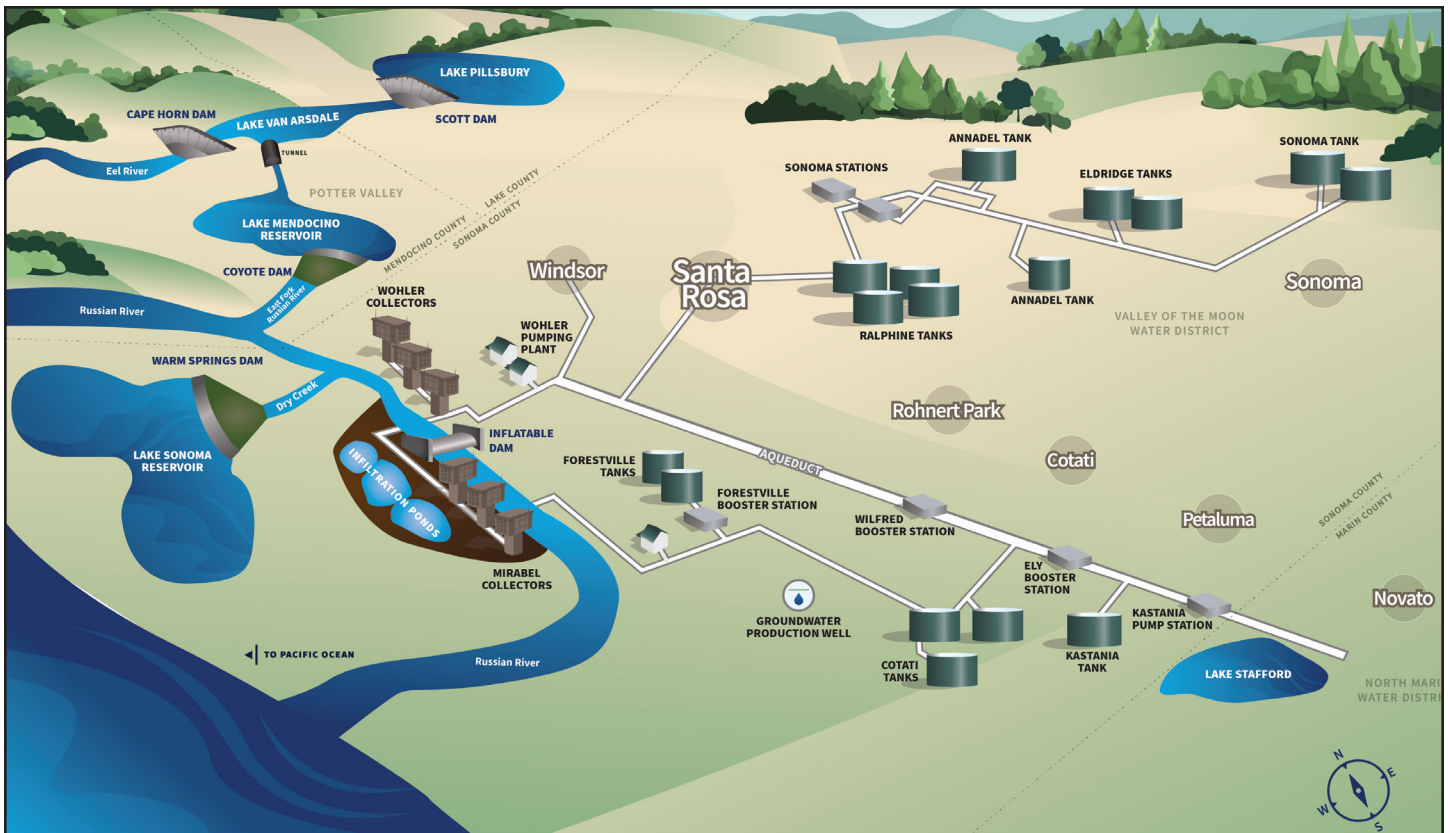
Wastewater: In 1995, Sonoma Water assumed responsibility from the Coun-

ty of Sonoma for managing the county sanitation zones and districts, which provide wastewater collection/treatment, and recycled water distribution/disposal services for approximately 22,000 residences and businesses. The zones include Geyserville, Penngrove and Sea Ranch. The sanitation districts include the Occidental, Russian River, Sonoma Valley and South Park County Sanitation Districts.

Water Rights

Senior water rights, as early as 1949, give priority to divert water from the Russian River, especially into storage in Lake Mendocino and Lake Sonoma. As the local project sponsor for the construction of the Coyote Valley and Warm Springs dams, Sonoma Water retains rights to store water in these reservoirs and controls the releases from the reservoirs' water supply pools.

Sonoma Water's rights authorize direct diversion and re-diversion of storage water at the Wohler and Mirabel collector wells at its production facilities



and additional locations associated with facilities of its contractors. Under the terms of Sonoma Water’s rights, minimum instream flows are maintained downstream of the reservoirs, as established under Decision 1610, in the Russian River and Dry Creek.

Main water supply sources

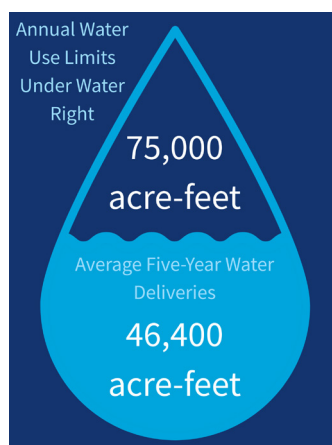
Lake Mendocino impounded by Coyote Valley Dam: Total storage capacity of 116,500 acre-feet with a water supply pool that seasonally varies from 68,400 acre-feet (winter) to 111,000 acre-feet (summer).

Lake Sonoma impounded by Warm Springs Dam: Total storage capacity of 381,000 acre-feet with a water supply pool of 245,000 acre-feet.

Wohler/Mirabel Collector

Wells: Six collector wells adjacent to the Russian River. Each collector well pumps from the alluvial aquifer adjacent to and beneath the Russian River.

Water supply wells: Three groundwater wells in the Santa Rosa Plain pump groundwater from several hundred feet below the



ground surface and are capable of providing up to 5 million gallons per day.

Major initiatives

Russian River Biological Opinion: Issued in 2025, has a 10-year term and states that it is National Marine Fisheries Service’s Opinion that water supply and flood control operations are not likely to jeopardize the continued existence of Central California Coast coho salmon, California Coastal Chinook salmon, Central California Coast steelhead, Southern Resident Killer Whale, or destroy or adversely modify their designated critical habitat.

The Eel-Russian Project Authority is a joint powers authority between the County of Sonoma, Sonoma Water and the Mendocino County Inland Water and Power Commission. Round Valley Indian Tribes has a seat on the Board of Directors.

The Eel-Russian Project Authority is negotiating with the Pacific Gas and Electric Company as the utility moves ahead with plans to surrender operations of the Potter Valley Hydroelectric Project. The Eel-Russian Project Authority will own, construct and operate a new water diversion facility to achieve a two-basin solution.